

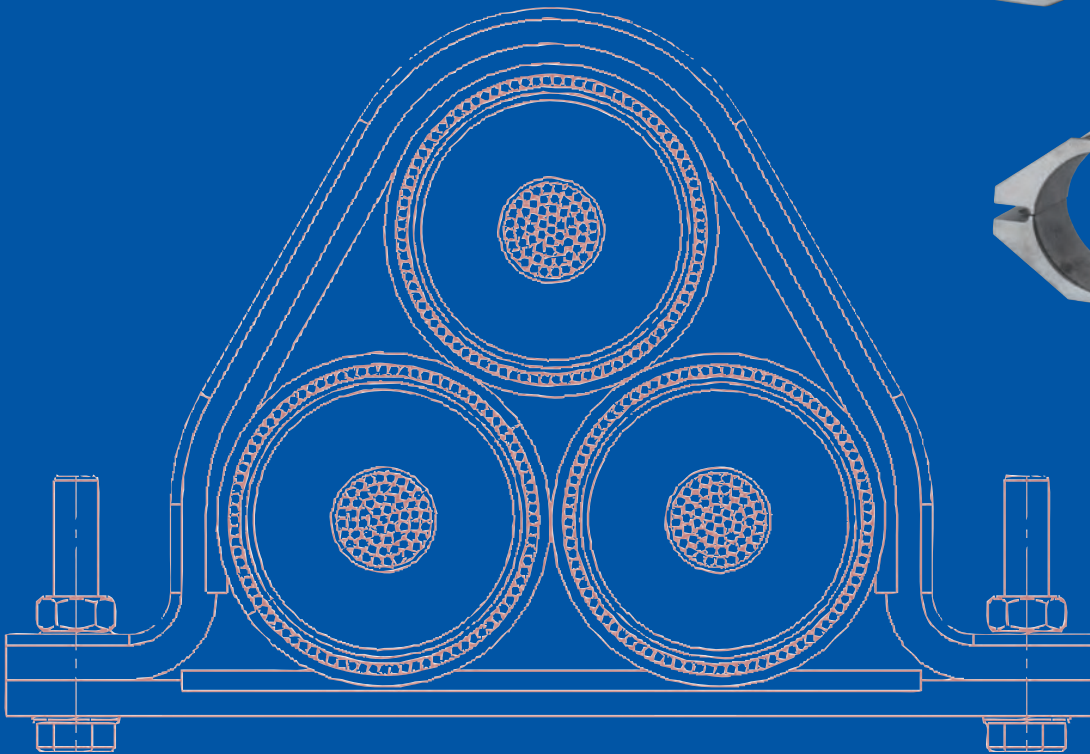
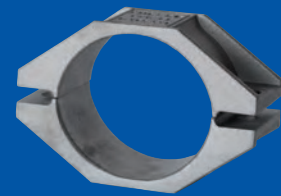


**EMELEC**

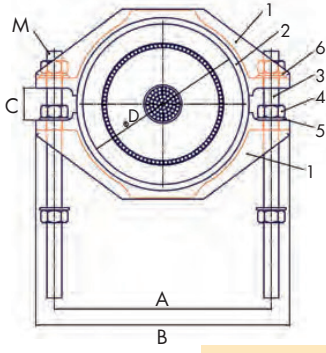


# CABLE FIXING CLAMPS

FOR HIGH VOLTAGE CABLE SYSTEMS



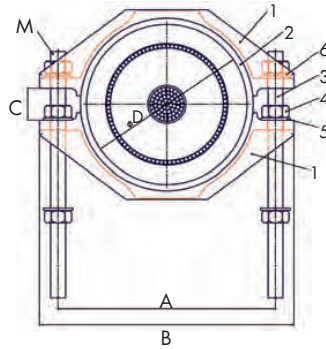
# Single type cable cleats



Item	Name of parts	Materials	Qty.
1	Upper&lower part	AL8-Si/Mn10	2
2	Protection	EPDM rubber	2
3	Screw	Galvanized-Steel	2
4	Hex nut	Galvanized-Steel	6
5	Washer	Galvanized-Steel	6
6	Spring washer	Galvanized-Steel	2

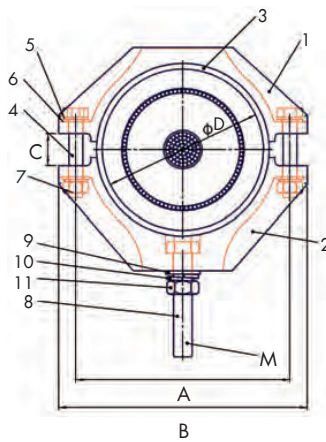


Type (xx)	D (mm)	A (mm)	B (mm)	C (mm)	E (mm)	M	Weight
EMELEC-FXC-01	Ø 30-40	80	100	12-22	45	M8	320 gr
EMELEC-FXC-02	Ø 40-50	90	110	12-22	45	M8	390 gr
EMELEC-FXC-03	Ø 50-60	100	120	12-22	45	M8	420 gr
EMELEC-FXC-04	Ø 60-70	110	130	12-22	45	M10	540 gr
EMELEC-FXC-05	Ø 70-80	120	140	12-22	45	M10	570 gr
EMELEC-FXC-06	Ø 80-90	136	166	16-26	60	M12	870 gr
EMELEC-FXC-07	Ø 90-100	146	176	16-26	60	M12	890 gr
EMELEC-FXC-08	Ø 100-110	156	186	16-26	60	M12	930 gr
EMELEC-FXC-09	Ø 110-120	166	196	16-26	60	M12	950 gr
EMELEC-FXC-10	Ø 120-130	176	206	16-26	60	M12	980 gr
EMELEC-FXC-11	Ø 130-140	196	226	18-28	90	M16	2.750 gr
EMELEC-FXC-12	Ø 140-150	206	236	18-28	90	M16	2.850 gr



Type (xx)	D (mm)	A (mm)	B (mm)	C (mm)	M	Weight
EMELEC-XL-FXC-01	Ø 110-120	166	196	18-28	M12	3,400 gr
EMELEC-XL-FXC-02	Ø 120-130	176	206	18-28	M12	3,500 gr
EMELEC-XL-FXC-03	Ø 130-140	186	216	18-28	M12	3,600 gr
EMELEC-XL-FXC-04	Ø 140-150	196	226	18-28	M12	3,700 gr

Item	Name of parts	Materials	Qty.
1	Upper&lower part	AL8-Si/Mn10	2
2	Protection	EPDM rubber	2
3	Screw	Galvanized-Steel	4
4	Hex nut	Galvanized-Steel	12
5	Washer	Galvanized-Steel	12
6	Spring washer	Galvanized-Steel	4

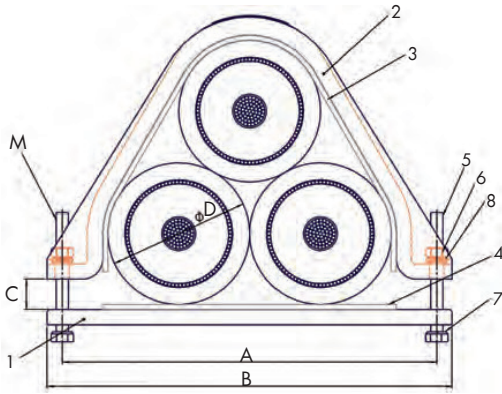


Type (xx)	D (mm)	A (mm)	B (mm)	C (mm)	M	Weight
EMELEC-XL-R-FXC-01	Ø 110-120	166	196	18-28	M16	3,900 gr
EMELEC-XL-R-FXC-02	Ø 120-130	176	206	18-28	M16	4,000 gr
EMELEC-XL-R-FXC-03	Ø 130-140	186	216	18-28	M16	4,100 gr
EMELEC-XL-R-FXC-04	Ø 140-150	196	226	18-28	M16	4,200 gr

Item	Name of parts	Materials	Qty.
1	Upper part	AL8-Si/Mn10	1
2	lower part	AL8-Si/Mn10	1
3	Protection	EPDM rubber	2
4	M12x70 Hexagon screw	Galvanized-Steel	4
5	M12 Spring washer	Galvanized-Steel	8
6	M12 Washer	Galvanized-Steel	8
7	M12 Hex nut	Galvanized-Steel	4
8	M16x90 Hexagon screw	Galvanized-Steel	1
9	M16 Washer	Galvanized-Steel	1
10	M16 Spring washer	Galvanized-Steel	1
11	M16 Hex nut	Galvanized-Steel	1



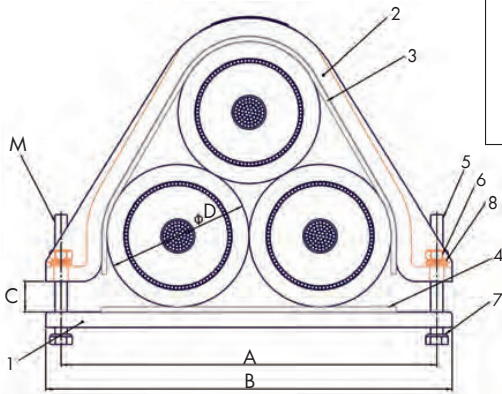
# Trefoil type cable cleats



Item	Name of parts	Materials	Qty.
1	Lower mounting part	AL8-SiMn10	1
2	Upper fixing part	AL8-SiMn10	1
3	Protection (upper)	EPDM rubber	1
4	Protection (lower)	EPDM rubber	1
5	Hex. head screw	Galvanized-Steel	2
6	Hex nut	Galvanized-Steel	2
7	Washer	Galvanized-Steel	4
8	Spring washer	Galvanized-Steel	2



Type (xx)	D (mm)	A (mm)	B (mm)	C (mm)	E (mm)	M	Weight
EMELEC-3BFXC-01	Ø 30-40	145	175	4,5-23	45	M8	750 gr
EMELEC-3BFXC-02	Ø 40-50	168	198	4,5-23	45	M8	880 gr
EMELEC-3BFXC-03	Ø 50-60	180	210	4,5-23	45	M8	945 gr
EMELEC-3BFXC-04	Ø 60-70	195	225	4,5-23	45	M10	1.020 gr
EMELEC-3BFXC-05	Ø 70-80	230	260	4,5-25	50	M10	1.400 gr
EMELEC-3BFXC-06	Ø 80-90	260	290	4,5-25	60	M12	1.850 gr
EMELEC-3BFXC-07	Ø 90-100	280	310	6,5-25	60	M12	2.010 gr
EMELEC-3BFXC-08	Ø 100-110	300	330	11-30	60	M12	2.175 gr
EMELEC-3BFXC-09	Ø 110-120	320	350	11-30	60	M12	2.265 gr
EMELEC-3BFXC-10	Ø 120-130	340	370	11-31	60	M12	2.400 gr
EMELEC-3BFXC-11	Ø 130-140	364	400	11-31	90	M16	5.640 gr
EMELEC-3BFXC-12	Ø 140-150	384	420	11-31	90	M16	5.920 gr

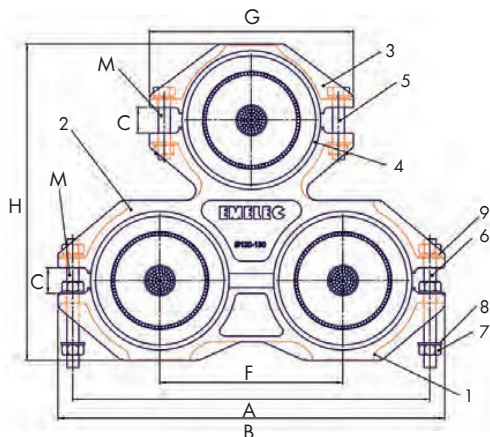


Item	Name of parts	Materials	Qty.
1	Lower mounting part	AL8-SiMn10	1
2	Upper fixing part	AL8-SiMn10	1
3	Protection (upper)	EPDM rubber	1
4	Protection (lower)	EPDM rubber	1
5	Hex. head screw	Galvanized-Steel	4
6	Hex nut	Galvanized-Steel	4
7	Washer	Galvanized-Steel	8
8	Spring washer	Galvanized-Steel	4



Type (xx)	D (mm)	A (mm)	B (mm)	C (mm)	M	Weight
EMELEC-XL-3BFXC-01	Ø 110-120	330	360	12-31	M12	5.930 gr
EMELEC-XL-3BFXC-02	Ø 120-130	350	380	12-31	M12	6.400 gr
EMELEC-XL-3BFXC-03	Ø 130-140	370	400	12-31	M12	6.660 gr
EMELEC-XL-3BFXC-04	Ø 140-150	390	420	12-31	M12	7.020 gr

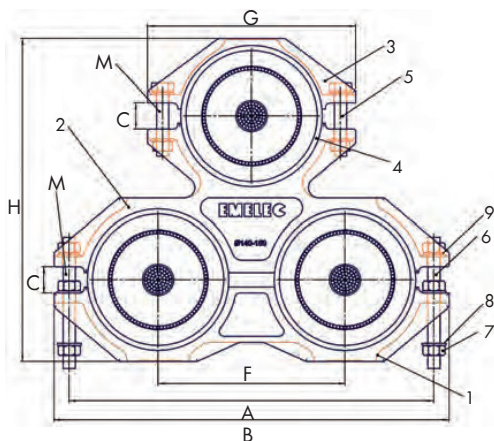




Item	Name of parts	Materials	Qty.
1	Lower part	AL8-SiMn10	1
2	Middle part	AL8-SiMn10	1
3	Upper part	AL8-SiMn10	1
4	Protection	EPDM rubber	6
5	Hex. head screw	Galvanized-Steel	2
6	Screw	Galvanized-Steel	2
7	Hex nut	Galvanized-Steel	8
8	Washer	Galvanized-Steel	10
9	Spring washer	Galvanized-Steel	4



Type (xx)	D (mm)	A (mm)	B (mm)	C (mm)	E (mm)	F (mm)	G (mm)	H (mm)	M	Weight
EMELEC-3AFXC-01	Ø 30-40	159	179	12-22	45	79	100	118-138	M8	1.045 gr
EMELEC-3AFXC-02	Ø 40-50	179	199	12-22	45	89	110	135-155	M8	1.200 gr
EMELEC-3AFXC-03	Ø 50-60	199	219	12-22	45	99	120	155-175	M8	1.350 gr
EMELEC-3AFXC-04	Ø 60-70	219	239	12-22	45	109	130	175-195	M10	1.600 gr
EMELEC-3AFXC-05	Ø 70-80	239	259	12-22	50	119	140	195-215	M10	1.400 gr
EMELEC-3AFXC-06	Ø 80-90	281	311	16-26	60	145	166	220-240	M12	3.150 gr
EMELEC-3AFXC-07	Ø 90-100	301	331	16-26	60	155	176	240-260	M12	3.350 gr
EMELEC-3AFXC-08	Ø 100-110	321	351	16-26	60	165	186	260-280	M12	3.550 gr
EMELEC-3AFXC-09	Ø 110-120	341	371	16-26	60	175	196	280-300	M12	3.800 gr
EMELEC-3AFXC-10	Ø 120-130	361	391	16-26	60	185	206	300-320	M12	4.000 gr
EMELEC-3AFXC-11	Ø 130-140	401	431	18-28	90	205	226	336-356	M16	8.040 gr
EMELEC-3AFXC-12	Ø 140-150	421	451	18-28	90	215	236	356-376	M16	8.390 gr



Item	Name of parts	Materials	Qty.
1	Lower part	AL8-SiMn10	1
2	Middle part	AL8-SiMn10	1
3	Upper part	AL8-SiMn10	1
4	Protection	EPDM rubber	6
5	Hex. head screw	Galvanized-Steel	4
6	Screw	Galvanized-Steel	4
7	Hex nut	Galvanized-Steel	16
8	Washer	Galvanized-Steel	20
9	Spring washer	Galvanized-Steel	8



Type (xx)	D (mm)	A (mm)	B (mm)	C (mm)	F (mm)	G (mm)	H (mm)	M	Weight
EMELEC-XL-3AFXC-01	Ø 110-120	341	371	18-28	175	196	293-313	M12	9.700 gr
EMELEC-XL-3AFXC-02	Ø 120-130	361	391	18-28	185	206	313-333	M12	10.250 gr
EMELEC-XL-3AFXC-03	Ø 130-140	381	411	18-28	195	216	333-353	M12	10.900 gr
EMELEC-XL-3AFXC-04	Ø 140-150	401	431	18-28	205	226	353-373	M12	11.300 gr



EMELEC Cable Cleats are available for trefoil and single cable applications where moderate to levels up to 40 kA-1 sec/50kA-1 sec /63kA-1 sec short circuit withstand are required. According to these conditions EMELEC Cable Cleats are tested at IPH Berlin Laboratories.



The unique design allows rapid installation. Manufactured from Aluminium Alloy(6000 series), acc. to BS EN 755, the product is lighter and tougher than the cast product.

The cleats are supplied with bolts, washers and nuts which are galvanized steel. In case of requirement stainless steel is available. EPDM (Neopren) rubber bedding with thickness of 5 mm is used with the cleats to increase friction resistance and accommodate of XLPE expansions as bedding during operation or short circuit conditions.

The way cables are fixed into place is very important. Poor clamping can damage the cable or put undue strain on cable terminations or the cable conductors, sheathing or insulation.

High Voltage Cables have special clamping requirements to ensure easy installation and the safe and long term performance of the cable system.



### Clamp selection criteria

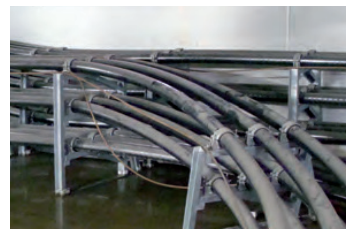
When choosing a cable clamp, the following factors should be considered;

- Total mechanical load the clamp is expected to support.
- Type of installation, such as horizontal runs, vertical runs, complex routes.
- Environmental conditions, indoor, outdoor, chemicals, salt-air etc.
- Operating temperature of the cables and the ambient temperatures.
- Material compatibility i.e. the structure to which the clamp will be fixed.
- Cable overall size, shape and configuration (flat, trefoil etc).

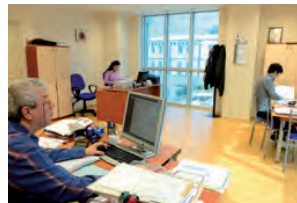


### Why use cable cleats for securing cables?

Cable cleats are designed to fix, retain and support cables. In addition, where short circuit faults are anticipated, correct cleating will result in the containment of the cables during a fault and







**EMELEC Electrical Engineering and Trading Co.**  
 Eski Ankara Yolu, Tuzla Organize San. Bölgesi (İTOSB) ,4. Cd. No: 25 Tepeören/Tuzla 34959 İstanbul  
 T: +90 (216) 593 3715-19, F: +90 (216) 593 3721 E-Mail: info@emelec.com.tr www.emelec.com.tr